



Das Lebensministerium



## Agriculture and Food Industry

Data for the year under review  
**2008**

Freistaat  Sachsen

State Ministry of the Environment and Agriculture

## Free State of Saxony – Data for the year under review: 2008

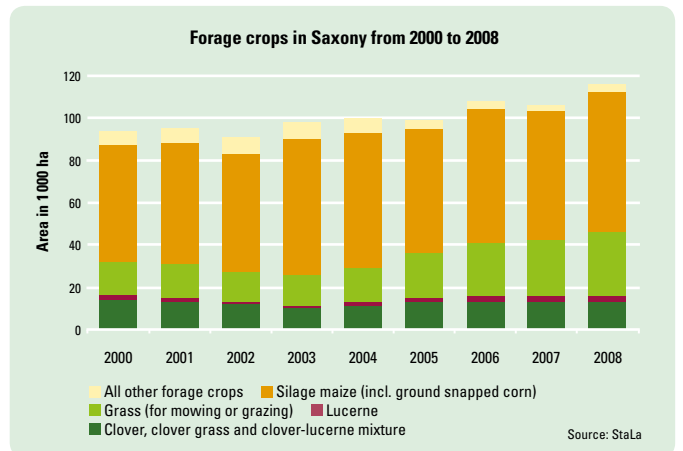
	Unit	SAXONY	GERMANY
<b>AREA AND POPULATION</b>			
<b>AREA <sup>1)</sup></b>			
Total area	1 000 ha	1.842	35.705
Agricultural area	1 000 ha	1.020	18.932
<b>Percentage of total area</b>	%	<b>55</b>	<b>53</b>
Forest area	1 000 ha	499	10.649
<b>Percentage of total area</b>	%	<b>27</b>	<b>30</b>
Water surface	1 000 ha	36	828
<b>Percentage of total area</b>	%	<b>2</b>	<b>2</b>
<b>POPULATION</b>			
Total population	1 000	4.193	82.218
Inhabitants/km <sup>2</sup>	number	228	231
Economically active population	1 000	1.961	40.330
Economically active population in agriculture, forestry, fishery	1 000	42	856
<b>FARM STRUCTURE</b>			
<b>LEGAL FORM</b>			
Number of holdings		6.962	374.500
Corporate bodies		632	4.700
of which: Registered co-operatives Ltd's and similars	number	204	1.100
Natural persons		276	2.800
of which: Partnerships		6.330	369.242
Individual farmers		378	19.100
		5.952	350.100
<b>FARM SIZE CATEGORIES <sup>2)</sup></b>			
Holdings below 2 ha AA		160	25.500
Holdings of 2 to below 10 ha AA		2.569	113.100
Holdings of 10 to below 20 ha AA		1.133	67.800
Holdings of 20 to below 50 ha AA		1.021	82.800
Holdings of 50 to below 100 ha AA		624	53.400
Holdings of 100 to below 500 ha AA	number	988	28.400
Holdings of 500 to below 1 000 ha AA		220	1.900
Holdings of 1 000 ha AA and more		247	1.500

<sup>1)</sup> Saxony: Statistical Office of the Free State of Saxony (StaLa) 2008, Germany: Land Use Survey 2004

<sup>2)</sup> Saxony: Agricultural Support 2008, Germany: Federal German Statistical Office, BMELV (figures for 2007)

	Unit	SAXONY	GERMANY
<b>LAND USE</b>			
Agriculturally Used Area (AA)	1 000 ha	914	16.926
Permanent Grassland	1 000 ha	188	4.789
<b>Percentage of AA</b>	%	<b>21</b>	<b>28</b>
Arable area	1 000 ha	721	11.933
<b>Percentage of AA</b>	%	<b>79</b>	<b>70</b>
Fallow lands	1 000 ha	5	310
Less-favoured areas (2005)	1 000 ha	353	9.426
Leased agricultural land (2007)	1 000 ha	731	10.456
<b>UTILIZATION OF CROPLAND</b>			
Cereals total		427	7.039
of which: Wheat		186	3.214
Barley		145	1.962
Oats		12	180
Rye		43	737
Grain maize, CCM		17	520
Root crops		21	636
of which: Potatoes	1 000 ha	7	260
Sugar beet		13	369
Oil seeds, incl. non food		131	1.405
of which: Rapeseeds		129	1.371
Sunflowers		1	25
Pulses		7	84
Forage plants		116	2.261
of which: Green/silage maize		66	1.567
<b>ORGANIC FARMING <sup>3)</sup></b>			
Farmed area	1 000 ha	28	911
Farms	number	358	19.824

<sup>3)</sup> Saxony: preliminary data of StaLa, Germany: ZMP, structural data 2008



	Unit	SAXONY	GERMANY
<b>YIELDS AND CROP VOLUMES</b>			
<b>ARABLE FARMING</b>			
Cereals total	dt/ha	66,7	71,2
(incl. grain maize, CCM)	1 000 t	2.846	50.105
of which: Wheat	dt/ha	76,4	80,9
	1 000 t	1.421	25.989
Barley	dt/ha	60,9	61,0
	1 000 t	884	11.967
Oats	dt/ha	41,8	44,2
	1 000 t	48	793
Rye	dt/ha	49,3	50,8
	1 000 t	210	3.744
Grain maize, CCM	dt/ha	87,0	99,1
	1 000 t	148	5.106
Rapeseeds (incl. non food)	dt/ha	36,1	37,6
	1 000 t	467	5.155
Potatoes	dt/ha	396,7	437,6
	1 000 t	287	11.369
of which: Early potatoes	dt/ha	323,2	316,0
	1 000 t	5	458
Sugar beet	dt/ha	608,0	622,9
	1 000 t	788	23.003
Silage maize	dt/ha	420,4	451,4
	1 000 t	2.785	70.950
<b>HORTICULTURE</b>			
Vegetable growing area in the open	1 000 ha	5	113
Vegetable crop volume in the open	1 000 t	64	3.264
Vegetable growing area under glass	ha	56	1.500
Vegetable crop volume under glass	1 000 t	7	156
<b>FRUIT GROWING</b>			
Area	1 000 ha	5	61
Crops	1 000 t	103	1.306
<b>VITICULTURE</b>			
Grape area	1 000 ha	0,4	100
Wine must yield	hl/ha	63	100
Total wine must	1 000 hl	27	10.001
<b>FISH FARMING <sup>4)</sup></b>			
Fish farming area	1 000 ha	8	24
Holdings	number	148	3.240
Production of food fishes	1 000 t	3	13

<sup>4)</sup>Freshwater fishery survey 2004

	Unit	SAXONY	GERMANY
<b>LIVESTOCK</b>			
Cattle stock total		509	12.988
of which: Dairy cows		191	4.229
Pigs total		646	26.719
of which: Fattening pigs	1 000 pcs	195	11.181
Breeding pigs		79	2.296
Sheep		125	2.437
Hens total (2007)		9.175	114.625
Horses (2007)		15	542
<b>BREEDING PERFORMANCE</b>			
<b>MILK PRODUCTION</b>			
Total milk production	1 000 t	1.608	28.656
Milk performance/cow	kg/year	8.398	6.827
<b>EGG PRODUCTION</b>			
Egg production	mln pcs	1.037	8.771
Laying performance/hen	pcs/year	312	299
<b>COMMERCIAL SLAUGHTERING <sup>5)</sup></b>			
<b>SLAUGHTERINGS</b>			
Cattle	1 000 pcs	39	3.535
Average slaughter weight	kg	296	331
Calves	1 000 pcs	4	317
Average slaughter weight	kg	82	127
Pigs	1 000 pcs	559	54.820
Average slaughter weight	kg	95	94
<b>MEAT PRODUCTION</b>			
Slaughter animals		66	6.365
of which: Cattle		12	1.170
Calves	1 000 t	0,3	40
Pigs		53	5.111

<sup>5)</sup>Animals of national and international provenance (without poultry)



	Unit	SAXONY	GERMANY
<b>STRUCTURE OF FOOD INDUSTRY ENTERPRISES IN PROCESSING SECTOR <sup>6)</sup></b>			
<b>ENTERPRISES</b>			
Food industry as a whole <sup>7)</sup>		348	5.851
of which			
Slaughtering and meat processing		87	1.322
Fruit and vegetable processing		21	249
Production of vegetable and animal oils and fats	number	2	30
Milk processing; ice cream		15	234
Grinding and hulling		4	117
Fodder production		11	202
Bakery products		150	2.404
Production of beverages		27	628
<b>TOTAL SALES</b>			
Food industry as a whole <sup>7)</sup>		8.086	170.429
of which			
Slaughtering and meat processing		811	35.241
Fruit and vegetable processing		524	9.705
Production of vegetable and animal oils and fat	EUR mln	N. A. <sup>8)</sup>	6.384
Milk processing; ice cream		3.118	25.047
Grinding and hulling		63	6.280
Fodder production		133	7.655
Bakery products		494	13.250
Production of beverages		931	20.436
<b>EXPORT QUOTA</b>			
Food industry as a whole	%	6,6	16,6

<sup>6)</sup> Enterprises of 20 or more employees

<sup>7)</sup> Including tobacco processing

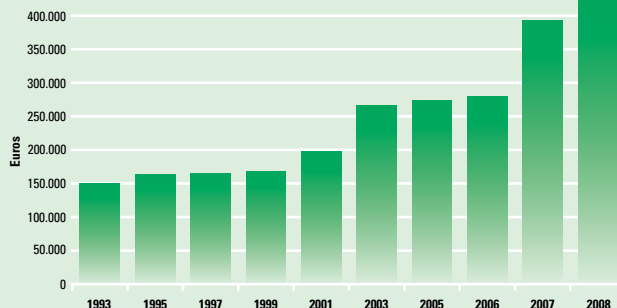
<sup>8)</sup> No data available

	Unit	SAXONY	GERMANY
<b>EXPORTS BY FOOD INDUSTRY ACC. TO FOREIGN TRADE STATISTICS <sup>9)</sup></b>			
<b>TOTAL EXPORTS</b>			
Food industry as a whole		844	49.646
of which			
Milk and dairy products		155	3.883
Cheese		193	2.982
Meat and meat products		65	7.197
Vegetable preparations and tinned products	EUR mln	31	562
Vegetable oils and fats		13	1.645
Bakery products		45	3.869
Cocoa and cocoa products		19	2.470
Sugar beets and sugar products		9	1.262
Nuts and dried fruit		48	549
Wheat		35	1.722

<b>PRODUCTION AND PROCESSING QUANTITIES</b>			
<b>MILK PROCESSING</b>			
Production of consumption milk		442	6.101
Production of yoghurt and desserts	1 000 t	371	2.961
Production of cheese		169	2.205
<b>FLOUR MILLING</b>			
Milling as a whole	1 000 t	264	8.164
of which soft wheat		200	6.828
<b>MIXED FEED</b>			
Processing as a whole		431	18.904
of which cereals	1 000 t	255	9.757
of which oil cake		100	6.112
Mixed feed products as a whole		496	21.831
<b>FAT PROCESSING</b>			
Processing of oil seeds and oleaginous fruits	1 000 t	432	11.457

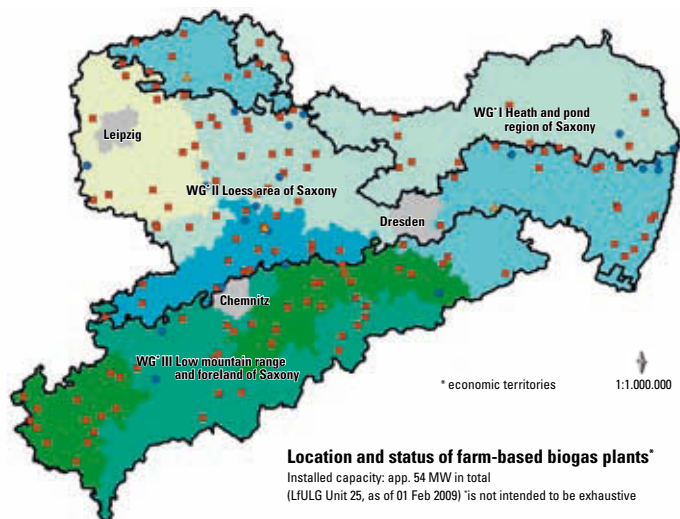
<sup>9)</sup> incl. unprocessed agricultural products

Turnover per employee in the food industry in Saxony



Source: StaLa

## Farm-based biogas plants and livestock density in the Saxon economic territories in 2008



### Location and status of farm-based biogas plants\*

Installed capacity: app. 54 MW in total  
(LfULG Unit 25, as of 01 Feb 2009) \*is not intended to be exhaustive

- Plant in design stage
- ▲ Plant in construction
- Plant in operation

### Distribution of livestock units (LSU) per 100 ha of agriculturally used area (AA) in the Saxon economic territories (WG)

Agricultural support Saxony 2008

- |                            |                                |
|----------------------------|--------------------------------|
| ■ up to 35 LSU / 100 ha AA | ■ 56 to 65 LSU / 100 ha AA     |
| ■ 36 to 45 LSU / 100 ha AA | ■ 66 to 70 LSU / 100 ha AA     |
| ■ 46 to 55 LSU / 100 ha AA | ■ more than 70 LSU / 100 ha AA |

GIS and mapping: LVA, LfULG

### Sources:

Working Party on Economic Aggregates at Regional State Level  
Federal Ministry for Nutrition, Agriculture and Consumer Protection (BMELV)  
Saxon State Surveying Office (LVA)  
Saxon State Office for Environment, Agriculture and Geology (LfULG)  
Federal German Statistical Office  
Statistical Office of the Free State of Saxony (StaLa)

### Imprint

#### Publisher:

Saxon State Ministry of the Environment and Agriculture (SMUL)  
www.smul.sachsen.de  
E-Mail: info@smul.sachsen.de

#### Editor:

SMUL, LfULG

#### Press date:

July 2009

#### Circulation:

600 copies

#### Layout:

Heimrich & Hannot GmbH

#### Printer:

Elbe Druckerei Wittenberg GmbH

#### Paper:

Printed on 100% recycled paper

#### Ordering address:

Zentraler Broschürenversand der  
Sächsischen Staatsregierung  
Hammerweg 30, D-01127 Dresden  
Tel: +49 (0) 351 210 36 71 · Fax: +49 (0) 351 210 36 81  
E-Mail: publikationen@sachsen.de  
(For all e-mail addresses: No access for electronically signed and coded electronic documents)