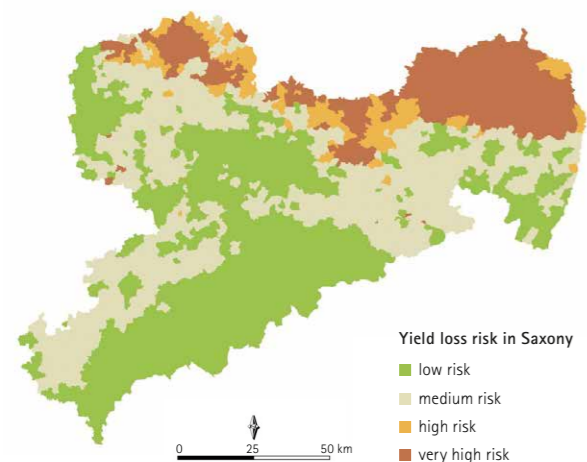


	Unit	SAXONY	GERMANY
LAND USE			
Agriculturally used area (AA)	1,000 ha	904	16,725
Permanent grassland	1,000 ha	184	4,651
PERCENTAGE OF AA	%	20	28
Arable land	1,000 ha	715	11,869
PERCENTAGE OF AA	%	79	71
Fallow land	1,000 ha	5	189
Less-favoured areas (2005)	1,000 ha	353	9,426
Leased AA as percentage of total AA (2013)	%	73	60
USE OF ARABLE LAND			
Total cereals		396	6,469
including: wheat		195	3,220
barley		115	1,574
oats		9	124
rye		35	630
grain maize, CCM		19	481
Root crops		20	621
including: potatoes	1,000 ha	7	245
sugar beet		13	373
Oil seed crops incl. non food		135	1,433
including: rape seeds		132	1,392
sun flowers		2	20
Pulses		7	92
Forage plants		139	2,857
including: green and silage maize		81	2,093
ORGANIC FARMING ⁴⁾			
Utilised agricultural area	1,000 ha	37	1,048
Holdings	number	526	23,398

⁴⁾ Reports of the control bodies acc. to CR(EC) 834/2007 in conjunction with CR(EC) 889/2008 as per the reference date 31.12.2014

Climate change increases the risk of yield loss



Publisher:
Saxon State Ministry
of the Environment and Agriculture (SMUL)
PO Box 10 05 10, 01076 Dresden
Citizens' hotline: +49 351 564 6814
E-mail: info@smul.sachsen.de
www.smul.sachsen.de
Editorial work:
SMUL, Landesamt für Umwelt, Landwirtschaft und Geologie
Layout:
Heimrich & Hannot GmbH
Photo:
Agrargenossenschaft Dorfchemnitz, photographer André Dix
Editorial deadline:
17 July 2015

Distribution:
This information is published by the State Government of Saxony in accordance with its statutory duty of informing the public. It may not be used by political parties or their candidates or volunteers for election advertising purposes within the period of six months before an election. This applies to all elections.

Agriculture and food industry data

Year under review 2014



	Unit	SAXONY	GERMANY
AREA AND POPULATION			
AREA ¹⁾			
Total area	1,000 ha	1,842	35,734
Agricultural area	1,000 ha	1,009	18,619
PERCENTAGE OF TOTAL AREA	%	55	52
Forest area	1,000 ha	500	10,816
PERCENTAGE OF TOTAL AREA	%	27	30
Water area	1,000 ha	38	867
PERCENTAGE OF TOTAL AREA	%	2	2
POPULATION			
Total population ²⁾	thousand	4,046	80,524
Inhabitants/km ² of total area	number	220	225
Total number of persons in employment	thousand	2,022	42,652
Persons employed in agriculture, forestry and fishery	thousand	29	656

STRUCTURE OF AGRICULTURAL HOLDINGS			
LEGAL FORM ³⁾			
Total number of agricultural holdings		100	100
of which: corporate bodies		11	2
including: e.G.		3	0.4
GmbH		6	1
of which: natural persons	%	89	98
of which: partnerships		7	8
sole proprietorships		82	90
of which: run on full-time basis		32	44
run on part-time basis		50	46
SIZE STRUCTURE OF HOLDINGS ³⁾			
Total number of agricultural holdings		5,512	285,000
Holdings of less than 5 ha AA		221	24,600
Holding of 5 to less than 10 ha AA		1,103	44,600
Holdings of 10 to less than 20 ha AA		1,092	59,000
Holdings of 20 to less than 50 ha AA		1,014	71,500
Holdings of 50 to less than 100 ha AA	number	591	50,200
Holdings of 100 to less than 200 ha AA		572	23,700
Holdings of 200 to less than 500 ha AA		456	7,800
Holdings of 500 to less than 1,000 ha AA		225	2,200
Holdings of 1,000 ha AA and more		238	1,500

¹⁾ Reference date 31.12.2013

²⁾ Saxony: reference date 31.12.2013, Germany: reference date 31.12.2012

³⁾ Saxony: agricultural support 2014, Germany: main survey on land use 2013

	Unit	SAXONY	GERMANY
YIELDS AND CROP VOLUMES			
ARABLE FARMING			
Total cereals (incl. grain maize, CCM)	dt/ha	79.8	80.5
including: wheat	1,000 t	3,012	52,010
	dt/ha	88.1	86.3
barley	1,000 t	1,717	27,785
	dt/ha	77.0	73.5
oats	1,000 t	885	11,563
	dt/ha	57.6	50.6
rye	1,000 t	49	627
	dt/ha	59.3	61.2
grain maize, CCM	1,000 t	209	3,854
	dt/ha	98.3	107.6
	1,000 t	182	5,142
Rape seeds (including non food)	dt/ha	46.0	44.8
	1,000 t	607	6,247
Potatoes	dt/ha	488.7	474.2
	1,000 t	339	11,607
Sugar beet	dt/ha	845.7	798.6
	1,000 t	1,102	29,748
Silage maize	dt/ha	438.9	473.3
	1,000 t	3,576	99,204
VEGETABLE GROWING (GROWN FOR SALE)			
Outdoor acreage	1,000 ha	4	115
Outdoor crop volume	1,000 t	64	3,541
Acreage under high accessible protective covers	1,000 ha	0.04	1.3
Crop volume under high accessible protective covers	1,000 t	4	161
FRUIT GROWING (CASH CROPS)⁵⁾			
Fruit-growing area	1,000 ha	4	67
Fruit crop volume	1,000 t	105	1,474
VITICULTURE			
Area under vines	1,000 ha	0.5	100
Wine must yield	hl/ha	43	92
Wine must crop	1,000 hl	21	9,212
CARP FARMING⁶⁾			
Fish pond area	1,000 ha	8	24
Holdings	number	183	3,885
Food carp production	1,000 t	1,877	5,699

⁵⁾ Saxony: land use and crop in 2014, Germany: area data based on survey of tree fruit growing 2012
⁶⁾ Data for 2013

Sources:

- Statistical Office of the Federal Republic of Germany
- National Accounting Working Group of the German Federal States
- Federal Ministry of Food and Agriculture
- Federal Office for Agriculture and Food
- Statistical Office of the Free State of Saxony
- Saxon State Office for Environment, Agriculture and Geology
- Annual report of the German inland fishery sector 2013
- German Cattle Breeders' Federation
- German Meteorological Service
- Saxon Government Enterprise for Basic Geodata and Surveying

Unless otherwise marked, the data shown are from the year 2014. Figures marked by * are provisional data.

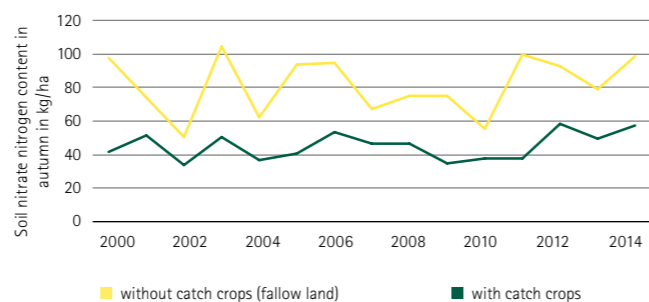
	Unit	SAXONY	GERMANY
LIVESTOCK⁷⁾			
Total number of cattle including: dairy cows		511	12,742
Total number of pigs including: fattening pigs		679	28,339
breeding pigs	1,000 animals	210	12,408
Sheep		72	2,074
		69	1,601
Total number of hens		10,834	160,774
Solipeds (horses, donkeys, mules, etc. in agricultural holdings)		11	461
ANIMAL PRODUCTION			
MILK PRODUCTION			
Total milk production	1,000 t	1,729*	32,395
Milk yield per cow	kg/year	8,980*	7,541
Milk yield per cow acc. to yield recording	kg/year	9,271	8,381
EGG PRODUCTION			
Commercial egg production	million eggs	951	11,557
Laying performance per hen	eggs/year	303	293
COMMERCIAL SLAUGHTERING⁸⁾			
ANIMALS FOR SLAUGHTER			
Cattle	1,000 animals	15*	3,216*
Average slaughter weight of bulls	kg	356*	336*
Average slaughter weight of cows	kg	277*	336*
Pigs	1,000 animals	127*	58,852*
Average slaughter weight	kg	94*	95*
MEAT PRODUCTION			
Total animals for slaughter including: cattle and calves	1,000 t	18*	6,734*
pigs		5*	1,135*
		13*	5,520*

⁷⁾ Cattle, pigs, sheep: reference date 03.11.2014
hens and solipeds: reference date 01.03.2013

⁸⁾ Animals of domestic and foreign origin

⁹⁾ Total cattle

Catch-crop cultivation reduces the nitrogen load of arable land

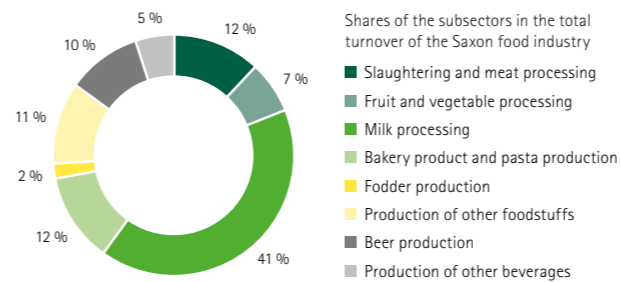


	Unit	SAXONY	GERMANY
STRUCTURE OF FOOD INDUSTRY ENTERPRISES, TURNOVER AND EXPORT RATIO¹⁰⁾			
ENTERPRISES			
Foodstuffs and fodder including:		336	5,267
slaughtering and meat processing		87	1,329
bakery production (without long-life bakery products)	number	166	2,410
fruit and vegetable processing		22	243
milk processing (without ice cream)		8	197
grinding and hulling		3	92
fodder production		12	218
Beverage production		28	561
EMPLOYEES IN FOOD INDUSTRY	number	19,874	559,776
TOTAL TURNOVER			
Foodstuffs and fodder including:		4,943	151,389
slaughtering and meat processing		719	40,129
bakery production (without long-life bakery products)	EUR million	564	15,758
fruit and vegetable processing		415	10,007
milk processing (without ice cream)		2,372	24,462
grinding and hulling		n.a. ¹¹⁾	4,014
fodder production		124	9,679
Beverage production		881	20,793
EXPORT RATIO			
Foodstuffs and fodder	%	13	22
Beverage production		6	11

¹⁰⁾ Enterprises with 20 and more employees

¹¹⁾ No data available

Milk processing is the most important subsector of the Saxon food industry



	Unit	SAXONY	GERMANY
EXPORTS BY FOOD INDUSTRY BASED ON FOREIGN TRADE STATISTICS¹²⁾			
TOTAL EXPORTS			
Total food industry including:		1,280*	65,594*
milk and dairy products (without cheese and butter)		292*	5,365*
cheese		269*	3,842*
meat and meat products		43*	9,136*
baked products		86*	4,999*
nuts and dried fruit		16*	971*
vegetable preparations and tinned products		15*	632*
cocoa and cocoa products	EUR million	40*	4,260*
vegetable oils and fats		19*	1,962*
beer		29*	1,063*
spirits		62*	1,321*
tobacco and tobacco products		77*	3,536*
sugar beet and sugar products		51*	1,837*
potatoes and potato products		7*	914*
wheat		9*	2,293*
barley		2*	176*
maize		5*	162*

¹²⁾ including unprocessed agricultural products

	Unit	SAXONY	GERMANY
PRODUCTION AND PROCESSING VOLUMES			
MILK PROCESSING			
Production of consumer milk		n.a. ¹¹⁾	5,030
Production of other dairy products ¹³⁾	1,000 t	n.a. ¹¹⁾	1,776
Production of cheese		159	2,272
MILLING INDUSTRY¹⁴⁾			
Total processing including: soft wheat	1,000 t	202	8,657
		130	5,976
COMPOUND-FEED INDUSTRY			
Total processing including: cereals		335	20,952
oil-seed cake	1,000 t	225	11,825
		72	6,419
Total compound-feed products		425	24,280
FAT PROCESSING INDUSTRY			
Processing of oil seeds and fruits	1,000 t	456	13,223

¹³⁾ Sour milk, kefir, yoghurt and mixed milk products

¹⁴⁾ Economic year 2013/14